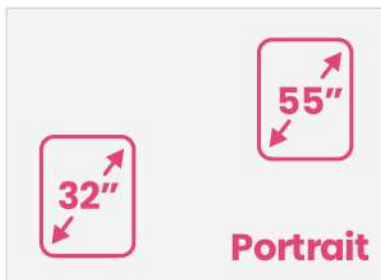
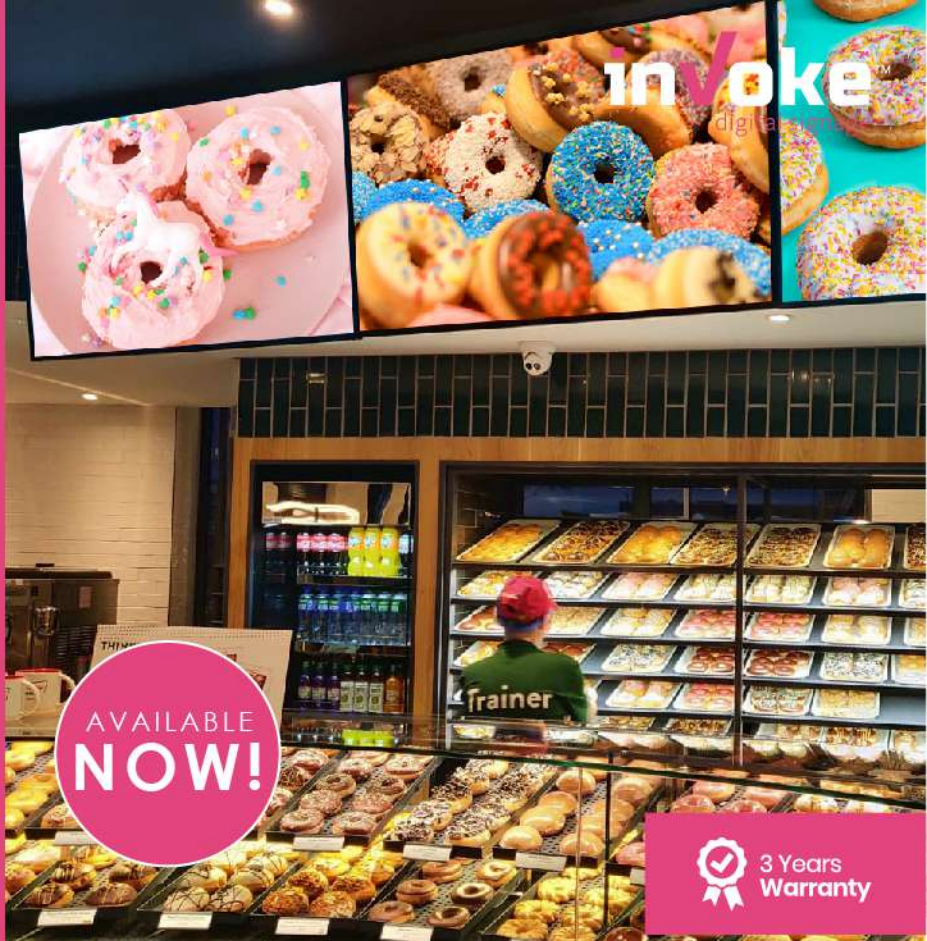


# INTERNAL MONITOR / MENU RANGE

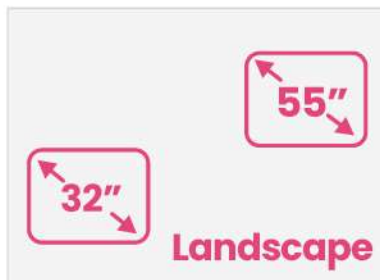
## SCREEN SIZE:

32" - 55"

- ✓ 450 nit/cd Display
- ✓ USB or Network Upload
- ✓ Built-in Android Player
- ✓ Slim Design & Narrow Bezel
- ✓ Landscape or Portrait



Portrait



Landscape

## 32" to 55" Models

Incredibly sleek, stylish and slim yet extremely visible with a choice of sizes; 32" to 55", all with a crisp 450nit/cd display. Designed to stand out in busy retail and commercial environments 24/7.



## USB or Network Upload

Content is easily uploaded to the in-built media player by USB stick or remotely via Network Cloud CMS.

[www.invokedigitalsignage.co.uk](http://www.invokedigitalsignage.co.uk)



## 24/7 Commercial Use

These displays use a commercial grade LCD panel and LED backlight. Designed to be in constant use 24/7 and have no external buttons or controls to avoid tampering.



## Exclusive Template Library

As well as being able to create your own layouts you can choose from our exclusive library of pre-designed editable templates. Choose an existing layout, add your own images and information then publish it to your screen.





# INTERNAL MONITOR / MENU RANGE - Specification Table

		32 Inch	43 Inch	50 Inch	55 Inch
Panel	Resolution	1920x1080			
	Display Area (mm)	698.4x392.85	941.2x529.4	1073x604	1209.6x680.4
	Aspect Ratio	16:9			
	Brightness (nit/cd)	450			
	Colour	16.7M			
	Viewing Angle	178°			
	Contrast Ratio	4000:1			
Audio	Speaker Type	5W, 8Ω (x2)			
AV Inputs	Video	HDMI, VGA			
	Audio	Audio Socket (3.5mm)			
Power	Power Consumption (W)	38	45	55	65
	Input Voltage	AC110~240V (50Hz~60Hz)			
Mechanical	Unit Size (WxHxD mm)	716x415x45	963.6x557.9x48.1	1096x632x60	1232x710x51
	Package Size (WxHxD mm)	870x565x170	1067x660x163	1238x760x195	1380x835x195
	VESA Holes (mm)	400x200		400x400, 400x300, 400x200	400x200
	Net Weight (kg)	8.6	11.25	23	18
	Gross Weight (kg)	11.8	15.2	28.9	23.95
Environmental	Operating Temperature	0 °C to 50 °C			
	Storage Temperature	-30°C to 60°C			
	Operating Humidity	10% to 80%			
	Storage Humidity	5% to 95%			
Computer	Media Formats	Video (MPG, AVI, MP4, RM, RMVB, TS), Audio (MP3, WMA), Image (JPG, GIF, BMP, PNG)			
	Media Resolution	1920x1080/1080x1920			
	Internal Memory	6GB			
	CPU	Quad-Core Cortex-A17@1.61GHz		Quad-Core ARM Cortex A17, 1.6GHz	Quad-Core Cortex-A17@1.61GHz
	GPU	Mali-T760 MP4 @600MHz		Quad-Core ARM Mali-T764	Mali-T760 MP4 @600MHz
	RAM	2GB DDR3			
	ROM	8GB NAND		8GB eMMC	8GB NAND
	USB	USB2.0 HOST (x2)		1 x USB (OTG/HOST), 1 x USB (HOST)	USB2.0 HOST (x2)
	LAN	10/100M Ethernet			
	Wi-Fi	802.11b/g/n/ac			
	OS	Android 5.1.1		Android 7.1	Android 5.1.1
	Graphic Engine	OpenGL ES 1.1/2.0/3.0/3.1, OpenCL 1.1, Renderscript, Direct3D 11.1		OpenGL ES 1.1/2.0/3.0/3.1, OpenCL 1.1, Renderscript, Direct3D 11.1	OpenGL ES 1.1/2.0/3.0/3.1, OpenCL 1.1, Renderscript, Direct3D 11.1
Accessories	Included	Scheduling Software, Remote Control, User Manual			
	Optional	Wall Mount, Floor Stand/Trolley, Ceiling Mount, Table Stand			
Warranty	Warranty Period	3 Year Warranty			
	Technical Support	Lifetime			

Errors and omissions excepted



## 450 nit/cd IPS Panel

Commercial grade IPS technology accurately displays image quality and colour depth with no fall-off in colour accuracy. These panels are designed to achieve ultimate lifelike colour temperature when used in either landscape or portrait.



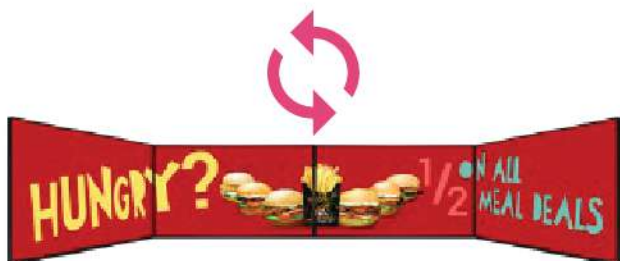
## Update Instantly from Anywhere

No special software installation or dedicated PC is required, simply login to our online portal and update your screens from anywhere in the world via the Cloud.



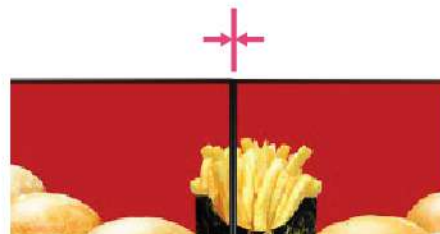
## Multi Screen Synchronisation

Create stunning content across multiple displays or have your menus change at the same time.



## Narrow Bezel

The slim border on the Digital Menu Boards allows your menu to take centre stage especially when multiple displays are placed side by side.



## Power Timer

The eco-friendly power timer allows you to assign daily or weekly on and off times.



## Wide Viewing Angle

Thanks to the IPS technology these displays provide fantastic image quality with a remarkable viewing angle of 178° in both landscape and portrait.



## Low Power Consumption

The LED backlight technology provides improved brightness and contrast. Their lifespan is drastically improved, and the power consumption is reduced by around 30%.



## USB Backup

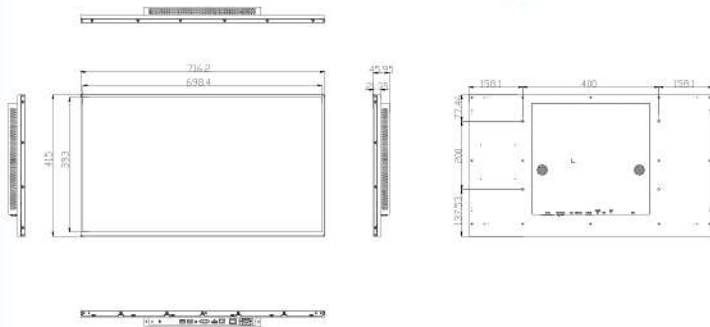
If you lose your internet connection you can still update the screen using a USB stick.



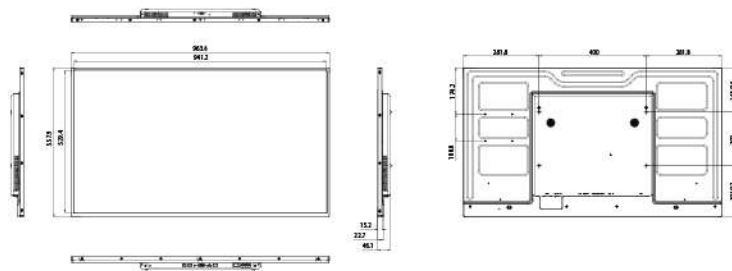


## INTERNAL MONITOR / MENU RANGE - Technical Drawings

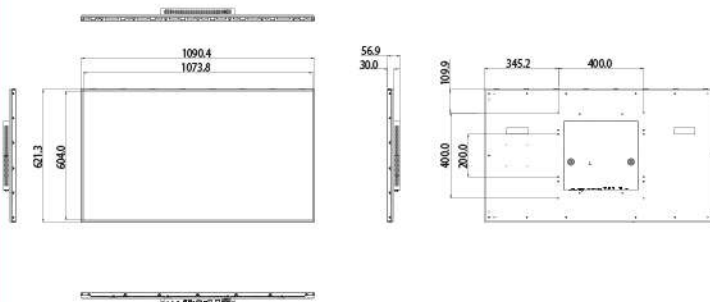
### 32" Technical Drawing



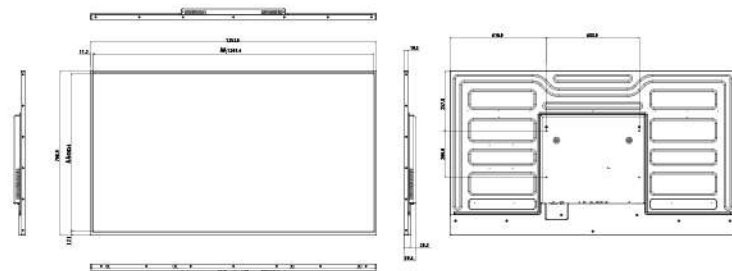
### 43" Technical Drawing



### 50" Technical Drawing



### 55" Technical Drawing



## INTERNAL MONITOR / MENU RANGE - Key Features

### Complete Package Solution

We have combined a 24/7 commercial display, a network Android media player, one year free CMS software and a library of pre-designed templates for the ultimate package solution.



### 24/7 Commercial Use

These displays use a commercial grade LCD panel and LED backlight. They are designed to be in constant use 24/7 and have no external buttons or controls to avoid tampering.



### 1st Year Free Software Subscription

The first year of using our cloud based CMS is absolutely free. You can also purchase 3 additional year's access at the point of purchase or make a one off payment to have access for life.



**inVoke™**  
digital signage

[www.invokedigitalsignage.co.uk](http://www.invokedigitalsignage.co.uk)





# Why Digital Signage?

Key Statistics that Prove Digital Signage

## Grab Attention & BOOST Sales!

Digital Displays capture **400%** more views than static displays.

**400%**



**8/10** customers have entered a store because of a sign catching their interest.

One retailer noted a **24%** increase in footfall after implementing digital signage technologies.



Nearly **7 in 10** customers have purchased a product or service because a sign caught their eye.

**80%** of brands experienced an increase of up to **33%** in additional sales through the use of digital signage.



**7x** **11x**

### Everyone's a winner

Halo effect from the advertised product  
**7x sales increase** on the family of brands  
**11x sales increase** on the overall category.

Digital Signage recall rate is higher than any form of traditional media with **83%** of people recalling at least one ad seen on a digital billboard in the past 30 days.



**inVoke**<sup>TM</sup>  
digital signage

[www.invokedigitalsignage.co.uk](http://www.invokedigitalsignage.co.uk)

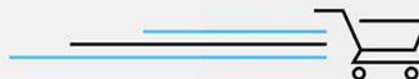
**800%** advertising revenue increase using Digital vs static signage in OOH

**1200%** revenue increase by switching to interactive or touch screen advertising over static signage <sup>10</sup>



Digital Signage reduces perceived wait times at checkout by as much as

**35%** <sup>13</sup>



'Occupied time feels shorter than unoccupied time' - David Maister - Psychology of queuing <sup>14</sup>



Digital menu boards typically present a **5%** sales lift.

### Tips to make your signage work



#### Content

Make it relevant, easy to read & attractive. Use motion where possible, keep it short (around 15 seconds).



#### Reliability

Commercial grade for extended use & durability. Components that work when you need them & require minimal maintenance.



#### Hardware Specifications

Select the right components to deliver the content playback performance your content requires and is suitable for the installation environment.

#### References:

[www.grandviewresearch.com/industry-analysis/digital-signage-market](http://www.grandviewresearch.com/industry-analysis/digital-signage-market)  
[www.arbitron.com/downloads/arbitron\\_digital\\_billboard\\_study.pdf](http://www.arbitron.com/downloads/arbitron_digital_billboard_study.pdf)  
[www.visiblebanking.com/infographics-retailbankingbranches-digital-signage-newdesign-11925/2/](http://www.visiblebanking.com/infographics-retailbankingbranches-digital-signage-newdesign-11925/2/)  
[www.smallbusinessbonfire.com/wp-content/uploads/2012/05/fedex\\_sign\\_infographic.jpg](http://www.smallbusinessbonfire.com/wp-content/uploads/2012/05/fedex_sign_infographic.jpg)  
[about.van.fedex.com/newsroom/global-english/fedex-office-survey-standout-signs-contribute-to-sales/](http://about.van.fedex.com/newsroom/global-english/fedex-office-survey-standout-signs-contribute-to-sales/)  
[www.digitalsignagetoday.com/news/nelsen-study-doh-increases-revenue-at-the-point-of-sale-2/](http://www.digitalsignagetoday.com/news/nelsen-study-doh-increases-revenue-at-the-point-of-sale-2/)

Raymond R. Burke, Journal of Advertising Research, Vol. 49, no. 2, June 2009, pp. 180-185  
[www.eclipsedigitalmedia.co.uk/top-benefits-and-roi-of-digital-menu-boards-2014/](http://www.eclipsedigitalmedia.co.uk/top-benefits-and-roi-of-digital-menu-boards-2014/)  
[www.digitalsignagetoday.com/blogs/beat-the-elements-with-outdoor-digital-signage-infographic/](http://www.digitalsignagetoday.com/blogs/beat-the-elements-with-outdoor-digital-signage-infographic/)  
[www.warc.com/Blogs/The\\_smart-outdoors\\_Why\\_Digital\\_Out\\_of\\_Home\\_is\\_the\\_space\\_to\\_watch\\_in\\_2015.blog?ID=1999](http://www.warc.com/Blogs/The_smart-outdoors_Why_Digital_Out_of_Home_is_the_space_to_watch_in_2015.blog?ID=1999)  
[davidmaister.com/articles/the-psychology-of-waiting-lines/](http://davidmaister.com/articles/the-psychology-of-waiting-lines/)

800+ installations NATIONWIDE

Established 2015

**inVoke™**  
digital signage

[www.invokedigitalsignage.co.uk](http://www.invokedigitalsignage.co.uk)

