

LED INDOOR VIDEO WALLS

- ✓ 550 nit/cd High Brightness Display
- ✓ Seamless Video Walls
- ✓ Modular Design
- ✓ Ultra-Quiet Operation
- ✓ Easy Install & Maintenance

AVAILABLE
NOW!



 **3 Years
Warranty**



Captivating Image Quality

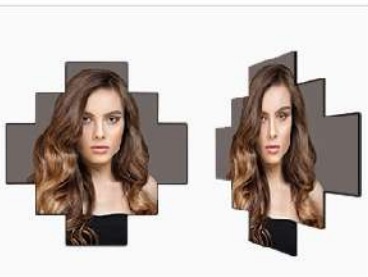
By utilising state-of-the-art SMD technology and advanced video processing, these displays really bring content to life by delivering crystal clarity and lifelike colours without any distortion. This is coupled with rapid refresh rates to ensure seamless content playback.



Easy Install & Maintenance

Due to their lightweight design, magnetic modules, positioning pins and simple cabinet structure, these displays are incredibly easy to install.

www.invokedigitalsignage.co.uk



Bespoke Video Walls

Thanks to their modular design, these versatile displays are not constrained by standard aspect ratios. Stand out from the crowd by sculpting seamless large-scale video walls to fill spaces of any shape and size in any location.



Fanless Design

Ultra-Quiet Operation

These DV-LED displays do not require cooling fans due to their super low heat emissions. This allows them to run silently, which is especially important in indoor spaces.

LED Indoor Video Walls - Specification Table

		P1.8	P2.5
LED Display	Pixel Pitch (mm)	1.86	2.5
	LED Type	SMD1515	SMD2121
	Pixel configuration	1R1G1B	
	Brightness (Calibrated)	550 nit/cd	
	Refresh rate	2880Hz	3840Hz
	Contrast Ratio	6,500:1	
	Viewing angle - Horizontal	170°	
	Viewing angle - Vertical	170°	
	Processing	12 bit	
	Frame rate	60 fps	
	Maintenance	Front service	
Cabinet	Module Resolution (px)	172x86	128x64
	Module Size (mm)	320x160x14.5	
	Cabinet Resolution (px)	344x258	256x192
	Cabinet Size (mm)	640x480x54.3	
	Net weight (Kg)	6.8	
Power	Input Voltage	240V AC	
	Cabinet Current	<0.45A	<0.45A
	Average Power Consumption (Per Cabinet)	35W	33W
	Max Power Consumption (Per Cabinet)	100W	95W
	Standby Power Consumption (Per Cabinet)	15W	15W
Environmental	IP Rating	TBC	
	Operating Temperature	-10°C to +30°C	
	Storage Temperature	-20°C to +40°C	
	Operating Humidity	10% to 65%	
	Storage Humidity	10% to 60%	
Warranty	Warranty Period	3 Year Warranty	
	Technical Support	Lifetime	



LED Indoor Video Walls - Features

Compact Diode Package

These displays feature an exceptionally small diode package size, increasing the space between diodes to achieve an ultra-high 6,500:1 contrast ratio. This ensures vibrant colours and true blacks across the display without sacrificing brightness, creating a truly immersive viewing experience.



6,500:1
Contrast Ratio



Easy Installation & Maintenance

Due to their lightweight design, magnetic modules, positioning pins and simple cabinet structure, these displays are incredibly easy to install. After installation, they can be serviced from the front of the display by quickly and efficiently removing the DV-LED modules for ultimate ease of maintenance.



UK Stock Held

Our fully-stocked UK warehouse means we can fulfil projects with a rapid turnaround time if required. From initial enquiry to finished installation, by holding extensive stock in the UK we can deliver results without long delays.



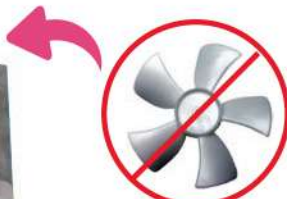
Bespoke Video Walls

Thanks to their modular design, these versatile displays are not constrained by standard aspect ratios. Stand out from the crowd by sculpting seamless large-scale video walls to fill spaces of any shape and size in any location. The unique cabinet size gives ultimate flexibility by ensuring a 16:9 aspect ratio is also possible.



Ultra-Quiet Operation

These DV-LED displays do not require cooling fans due to their super low heat emissions. Not only does this allow them to run silently, which is especially important in indoor spaces, it also makes them more robust and reliable as there are no moving parts.



Fanless Design

Remote Content Updates

Publish and monitor content from anywhere in the world via the internet using our own cloud-based CMS software, which is designed to be cost-effective and user-friendly. Plus, avoid the hassle associated with coordinating multiple suppliers by sourcing hardware and software from one place.



Comprehensive Quality Control

From production through to installation, our DV-LED solutions undergo multiple rounds of strict quality control to ensure long-lasting reliability. In addition, quality calibration guarantees consistent image quality across the whole display.

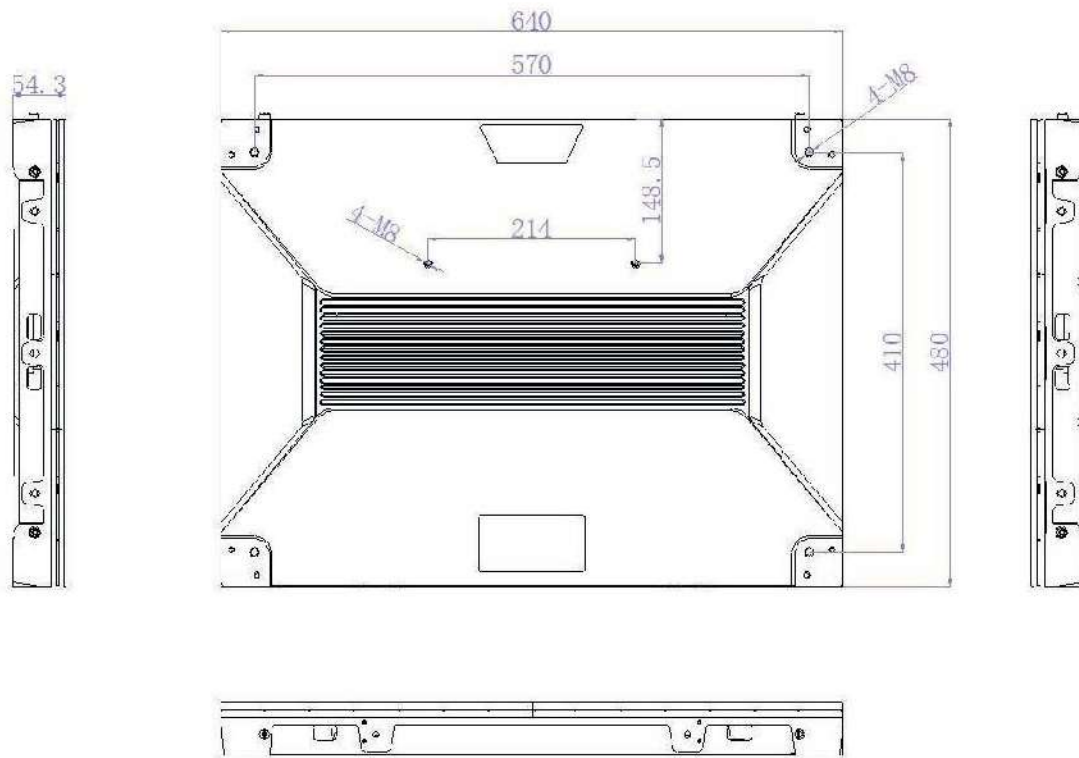


End-to-End Project Management

Every DV-LED project is unique and they each come with their own challenges, but we're here to advise and support you every step of the way. From designing bespoke displays to ensuring hassle-free installation and even providing maintenance, we can deliver full end-to-end project management where required.



LED Indoor Video Walls - Cabinet Technical Drawing



LED Indoor Video Walls - Key Features

- OPTIMISED FOR INDOORS
- CAPTIVATING IMAGE QUALITY
- ULTRA HIGH CONTRAST RATIO
- FLAT SCREEN SURFACE



- SEAMLESS VIDEO WALLS
- 550NIT/CD HIGH BRIGHTNESS
- SLIM LIGHTWEIGHT CABINETS
- MODULAR DESIGN

Ideal for:

- Hair Salons
- Beauty Salons
- Aesthetic Clinics
- Dental Clinics
- Opticians
- Pharmacies
- Travel Agents
- Estate Agents
- Restaurants
- Takeaways
- Dry Cleaners

Grab attention
BOOST Sales!




Upload

Design Studio

CONTENT IS DOWNLOADED ONTO THE INTERNAL MEDIA PLAYER (NOT STREAMED)

Why Digital Signage?

Key Statistics that Prove Digital Signage

Grab Attention & BOOST Sales!

Digital Displays capture **400%** more views than static displays.

400%



8/10 customers have entered a store because of a sign catching their interest.

One retailer noted a **24%** increase in footfall after implementing digital signage technologies.



Nearly **7 in 10** customers have purchased a product or service because a sign caught their eye.

80% of brands experienced an increase of up to **33%** in additional sales through the use of digital signage.



7x **11x**

Everyone's a winner

Halo effect from the advertised product
7x sales increase on the family of brands
11x sales increase on the overall category.

Digital Signage recall rate is higher than any form of traditional media with **83%** of people recalling at least one ad seen on a digital billboard in the past 30 days.

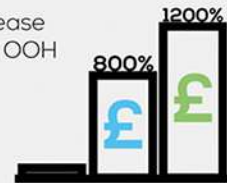


inVokeTM
digital signage

www.invokedigitalsignage.co.uk

800% advertising revenue increase using Digital vs static signage in OOH

1200% revenue increase by switching to interactive or touch screen advertising over static signage ¹⁰



Digital Signage reduces perceived wait times at checkout by as much as **35%** ¹³



'Occupied time feels shorter than unoccupied time' - David Maister - Psychology of queuing ¹⁴



Digital menu boards typically present a **5%** sales lift.

Tips to make your signage work



Content

Make it relevant, easy to read & attractive. Use motion where possible, keep it short (around 15 seconds).



Reliability

Commercial grade for extended use & durability. Components that work when you need them & require minimal maintenance.



Hardware Specifications

Select the right components to deliver the content playback performance your content requires and is suitable for the installation environment.

References:

www.grandviewresearch.com/industry-analysis/digital-signage-market
www.arbitron.com/downloads/arbitron_digital_billboard_study.pdf
www.visiblebanking.com/infographics-retailbankingbranches-digital-signage-newdesign-11925/2/
www.smallbusinessbonfire.com/wp-content/uploads/2012/05/fedex_sign_infographic.jpg
about.van.fedex.com/newsroom/global-english/fedex-office-survey-standout-signs-contribute-to-sales/
www.digitalsignagetoday.com/news/nielsen-study-dohh-increases-revenue-at-the-point-of-sale-2/

Raymond R. Burke. Journal of Advertising Research. Vol. 49, no. 2, June 2009, pp. 180-185
www.eclipsedigitalmedia.co.uk/top-benefits-and-roi-of-digital-menu-boards-2014/
www.digitalsignagetoday.com/blogs/beat-the-elements-with-outdoor-digital-signage-infographic/
www.warc.com/Blogs/The_smart-outdoors_Why_Digital_Out_of_Home_is_the_space_to_watch_in_2015.blog?ID=1999
davidmaister.com/articles/the-psychology-of-waiting-lines/

